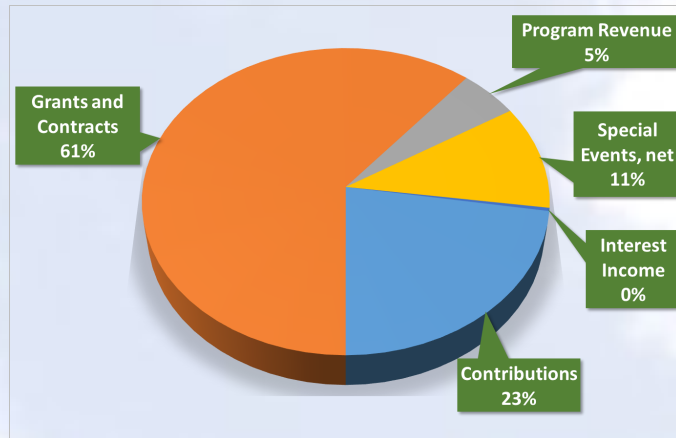
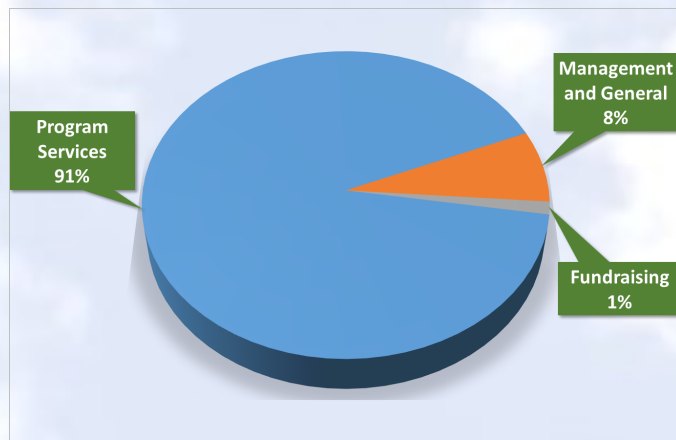


Financial Statement



Revenues and Support

Contributions.....	\$444,095
Grants and Contracts.....	1,204,021
Program Revenue.....	101,983
Special Events, net.....	216,534
Interest Income.....	\$6,555
Total Revenues and Support	\$1,973,188



Expenses

Program Services.....	\$1,868,370
Management and General.....	154,178
Fundraising	27,406
Total Expenses	\$2,049,954

Change in Net Assets Without Donor Restrictions (\$76,766)



FIRST LIGHT

A Center for Homeless Women and Children

2018-2019 Annual Report

The mission of First Light is to work with homeless women and their children to create hospitality in a safe and nurturing community, to encourage them to maintain dignity, to find hope, to seek opportunity, and to grow spiritually, thereby achieving their full potential

2018-2019 Board of Directors

2018-2019 Sponsors

Full Potential Society

Clayne Crawford Foundation, Inc.
Community Foundation of Greater Birmingham
Consolidated Pipe & Supply Co., Inc.
First Presbyterian Church of Birmingham
Hugh Kaul Foundation
Independent Presbyterian Church PACE
Protective Life Corporation
Protective Life Foundation
Robert R. Meyer Foundation

Circle of Opportunity

Balch & Bingham, LLP
Caring Foundation
Charles and Estelle Campbell Foundation
Church of the Highlands
Energen Foundation

Housing Affordability Trust
Medical Properties Trust
Saint Luke's Episcopal Church
Surgical Care Affiliates
Susan Mott Webb Charitable Trust
Thompson Foundation, Inc.
Trinity United Methodist Church
Vestavia Hills United Methodist Church

Community of Hope

Alabama Power Energizers
Birmingham Division
Altec Industries, Inc.
Baker, Donelson, Bearman, Caldwell and Berkowitz, PC
Blue Cross Blue Shield of Alabama
Bradley Arant Boulton
Cummings, LLP
Brasfield & Gorrie, LLC
Bressler, Amery and Ross, PC
Burr & Forman, LLP
Grotting & Cohn Plastic Surgery

iStand Walking Canes
Lightfoot, Franklin & White, LLC
Matrix Solutions System, Inc.
Mountain Brook Presbyterian Church
National Bank of Commerce
Our Lady of Sorrows Catholic Church
Regions Bank
Riverchase United Methodist Church
Riverpeak Partners of Raymond James and Associates, Inc.
Saint Peter the Apostle Catholic Church

Circle of Dignity

Constantine International Foods, Inc., d/b/a Naji's Pita Gourmet
Edgewood Presbyterian Church
Ferlisi Jolley Associates, Inc.
Hare Wynn Foundation
Stifel Investments

Circle of Community

B.L. Harbert International LLC
Bluff Park United Methodist Church
Concepts & Associates, Inc.
Dunn-French Foundation
Flanagan Contracting LLC
Jemison Investment Co. Advised Fund
JP Morgan Chase
Matrix Solutions Systems, Inc.
R.J. Mechanical
Saint Francis Xavier Catholic Church

Circle of Hospitality

Saint Mark the Evangelist Catholic Church
Vulcan Materials Company

PRESIDENT

James C. Phillips
Community Volunteer

VICE PRESIDENT

Staci M. Pierce
Action Resources, Inc.

TREASURER

Ben Greer
Protective Life Corporation

SECRETARY

Elizabeth Tucker
Community Volunteer

Cindy Coyle, AIA, LEED
ArchitectureWorks

Tiffany Ford
Spire

Cary Lott, CIC
Iron Mountain Insurance

Marva J. May
Blue Cross and Blue Shield of Alabama

Lisa N. Moose
FIS

Heather Nelms
ProAssurance

Dorothy Sanders
Community Volunteer

Darri Scott
Community Volunteer

Emma Taylor
Community Volunteer

Erol Wallace
RSM US LLP

Dee Repici, Ex Officio
President, First Light
Young Partners
Surgical Care Affiliates

Rev. Cat Goodrich, Ex Officio
First Presbyterian Church

Emergency Shelter

Supportive Housing

First Light's emergency shelter is comprised of 36 beds and one family room on the second floor of the building. The emergency shelter operated at full capacity so up to twenty additional guests were accommodated each night on pallets in the overflow shelter in the day room on the first floor. Two offices on the first floor have also been repurposed to allow some privacy to families with children or guests recovering from surgery or other serious health issues.

The most vulnerable often stumble into homelessness because they do not have a trusted network of family, friends, and neighbors who can help them overcome hardships.

Through First Light's supportive housing programs, qualified professionals provide case management that empowers those with difficult, complex issues to find and sustain housing.



In 2018-2019, First Light's emergency shelter:

- Provided safety, opportunity and hope to 1,063 guests
- Guests served included:
 - 432 disabled
 - 19 veterans
 - 395 victims of domestic violence
 - 61 elderly
- Each guest was evaluated to determine whether she would benefit from mental health care and referred to available treatment if necessary. The diagnosis and treatment of a mental health disorder is often the first, essential step to stability and self-sufficiency.
- Every guest at First Light was assigned to a qualified professional to get individualized case management and wraparound support to help her develop and adhere to a plan of action to rebuild her life.
- More than 1,000 volunteers served at First Light's emergency shelter to assure guests they are part of a caring community.

Donors attending the 2019 First Light Gala provided the financial support to replace the heating and air conditioning unit serving the kitchen, day room and the repurposed office space that accommodates guests on the first floor of the First Light building.

This investment will provide comfort to First Light's guests and to the caring volunteers who bring them warm food and hospitality.



218 children found shelter at First Light in 2018-2019.



In 2018-2019:

- Twenty-four families with eight children received necessary case management to remain housed in the Shelter+Care voucher program of the Jefferson County Housing Authority.
- Thirty-four women who are disabled or who had been chronically homeless got the help they needed to sustain housing in Bessemer, East Birmingham, and through First Light's *Noah's Ark* program.
- Ten women disabled by severe mental illness were housed on the fourth floor of the shelter.
- Six women found safety in our community's only transitional supportive housing program for victims of domestic violence with no income.
- Eighteen families with 11 children received financial assistance and social services through First Light's unique *Forever Home* program for homeless women with children.

In 2018-2019, First Light launched its newest project which expands its impact to homeless low-income individuals and families throughout the community. First Light served 153 people, including 57 children, in this federally funded rapid re-housing project which provides rental assistance and vital supportive case management to individuals and families with the most critical needs.

Case managers recruited and enrolled participants and assisted them in applying for, obtaining, maintaining, and renewing appropriate benefits.

